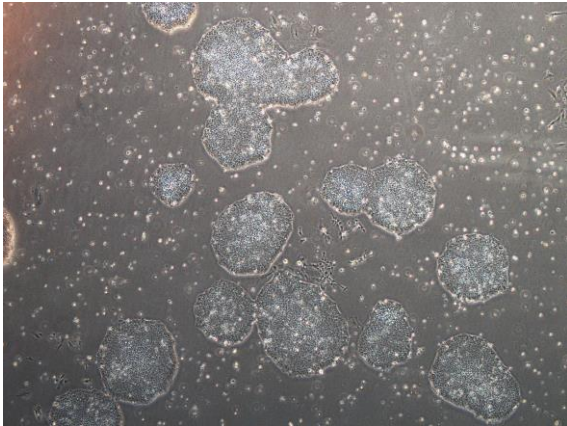
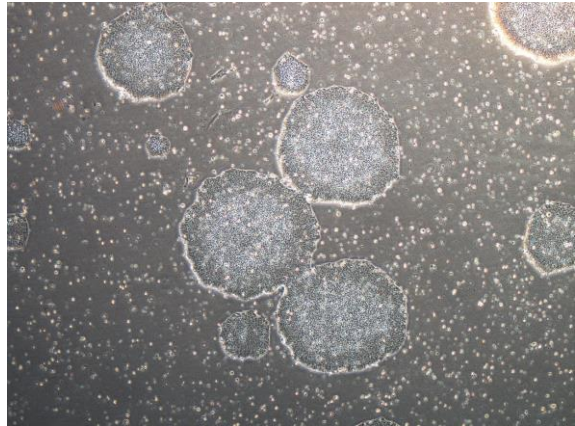


【 CiRA-j-1044 】 Morphology of iPSC colonies

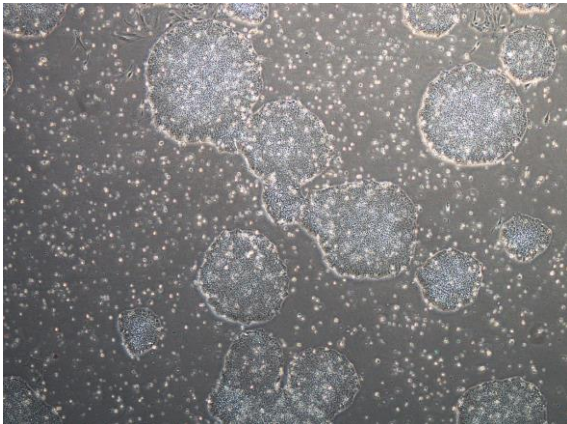
CiRA-j-1044-A: passage-2



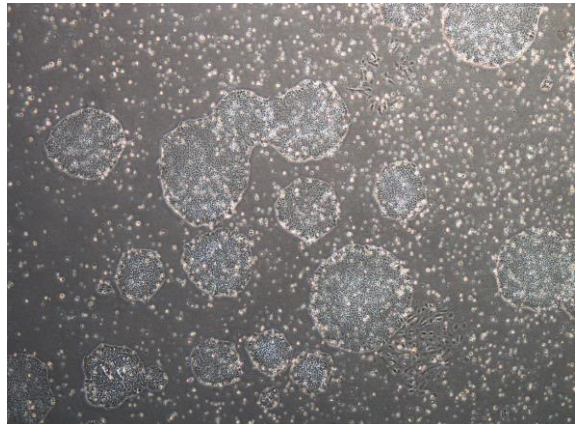
CiRA-j-1044-B: passage-2



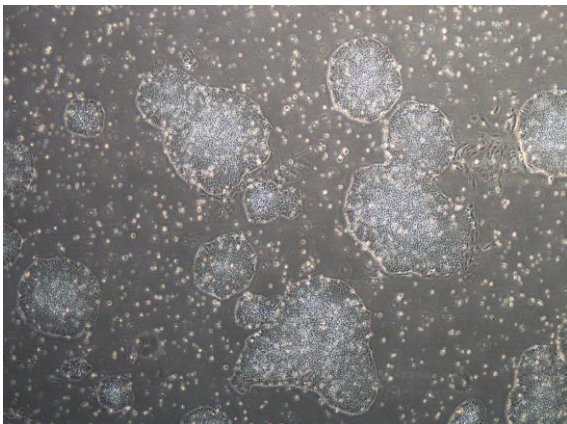
CiRA-j-1044-C: passage-2



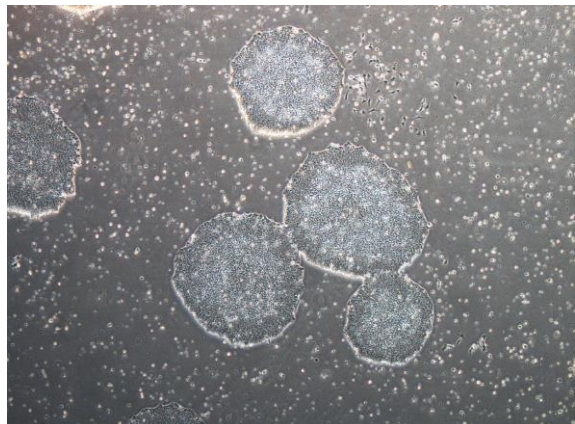
CiRA-j-1044-D: passage-2



CiRA-j-1044-E: passage-2



CiRA-j-1044-F: passage-2



(All images were captured at 4x magnification)